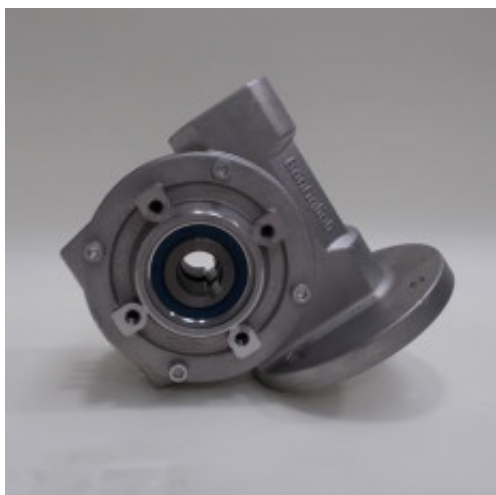


AE-018 - Gearbox



Spare Part Number: AE-018

Net Weight: 0.00kg

Net Dimensions: 0.00cm x 0.00cm x 0.00cm

Technical Datasheet: [MAN](#)

Description

AE-018 Gearbox

Mechanical component consisting of a series of integrated gears within a housing with the scope of altering torque and speed between the driving device (the motor) and a load.

Equipment Reference

610 for **M1, M2, M3**

620 for **M2, M3**

621 for **M2, M3**

830 for **M2, M3**

Catalogues/Families

Suitable for the following equipment models:

CLASSIC 3 P

CLASSIC 4 P

EASY TO PLATE EVO 3
IPD

EASY TO PLATE EVO 3 IPI	
EASY TO PLATE EVO 4 IPD	
EASY TO PLATE EVO 4 IPI	
EASY TO PLATE EVO 5 BPD	
EASY TO PLATE EVO 5 BPI	
EASY TO PLATE EVO 5 IPD	
EASY TO PLATE EVO 5 IPI	
EVO 3 IP	
EVO 4 IP	
EVO 5 BP	
EVO 5 IP	
Spare Part Type	
Mechanical Component	
Stock Type	
Standard Stock	

Product Gallery

