

AD-055 - Spherical Bearing



Spare Part Number: AD-055

Net Weight: 0.00kg

Net Dimensions: 0.00cm x 0.00cm x 0.00cm

Description

AD-055 Spherical Bearing ø26

Spherical bearing used to absorb inclination correction on rotary movements of the hinge.

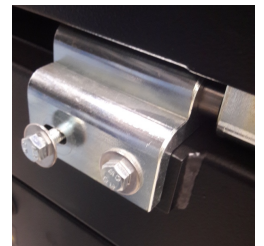
Spherical Bearing ø26

15 Lg19x12 - GE15 DO

Used in EVO 4-5 E Top Lid hinge

Other images - Hinge

Used in EVO 4-5 E Top lid hinge



Catalogues/Families

Suitable for the following equipment models:

EVO 4 E	
EVO 4 ELF	
EVO 5 E	
Spare Part Type	
Mechanical Component	
Stock Type	
Standard Stock	

Product Gallery

